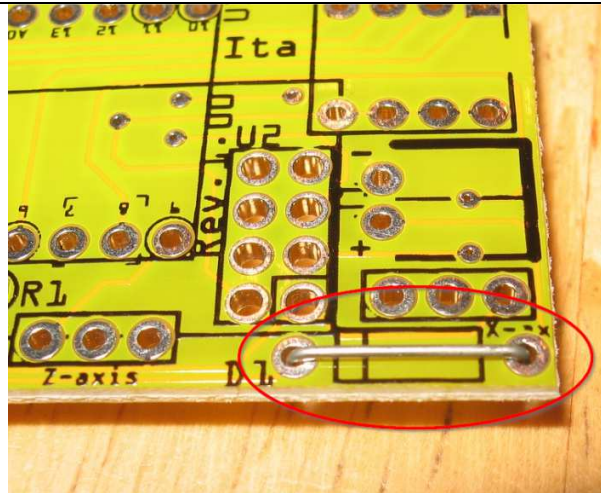
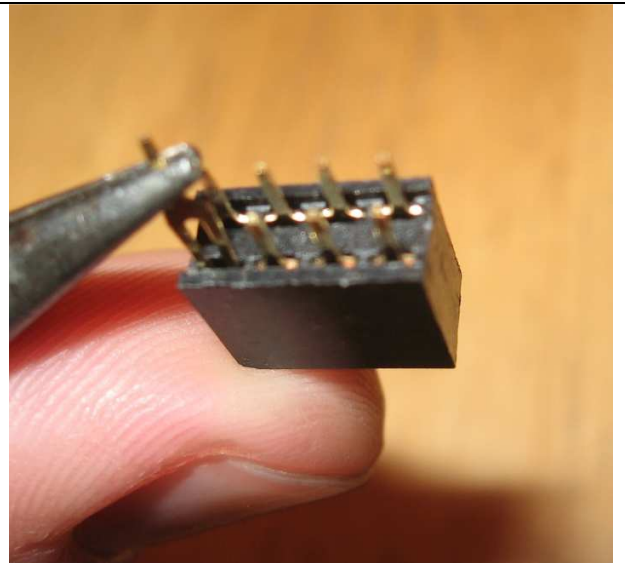


3 axis motion control gyroscope – Ita board

Diode modification



Replace diode with piece of wire.



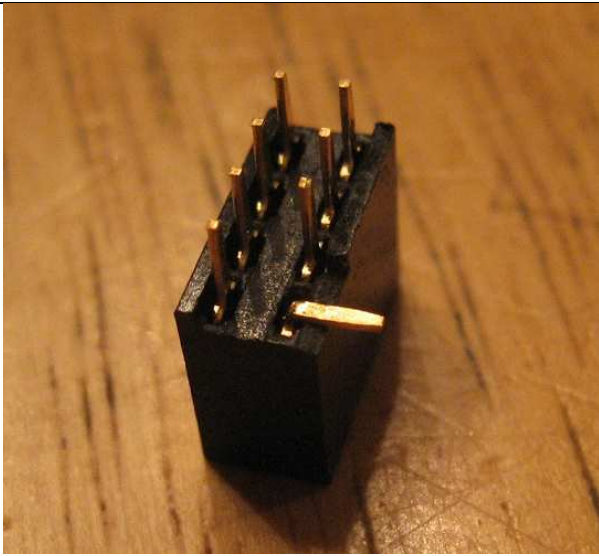
Gently remove a tab connector.



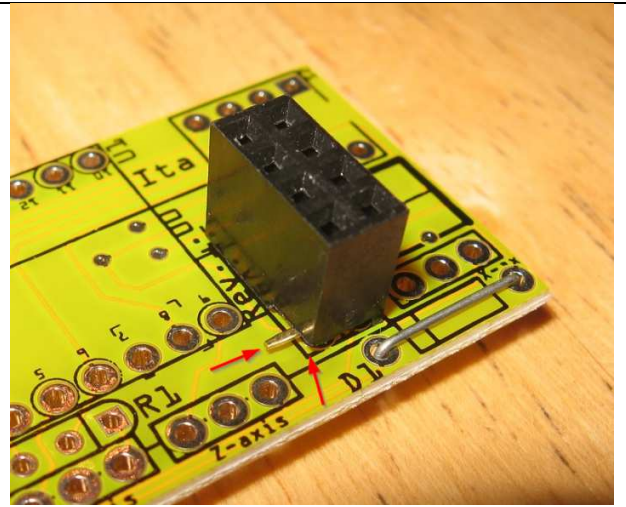
Cut the edge of the removed connector's tab.



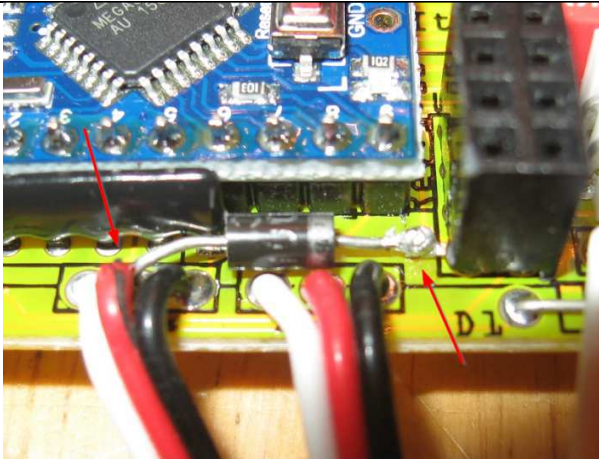
Bend tab like this.



Reinstall the tab.



Install the connector ensuring that the tab does not touch the PCB's pad.



Solder the anode to the red wire of servo cable and the cathode to the connector's tab.